

Livermore Amador Valley  
**TRANSIT AUTHORITY**



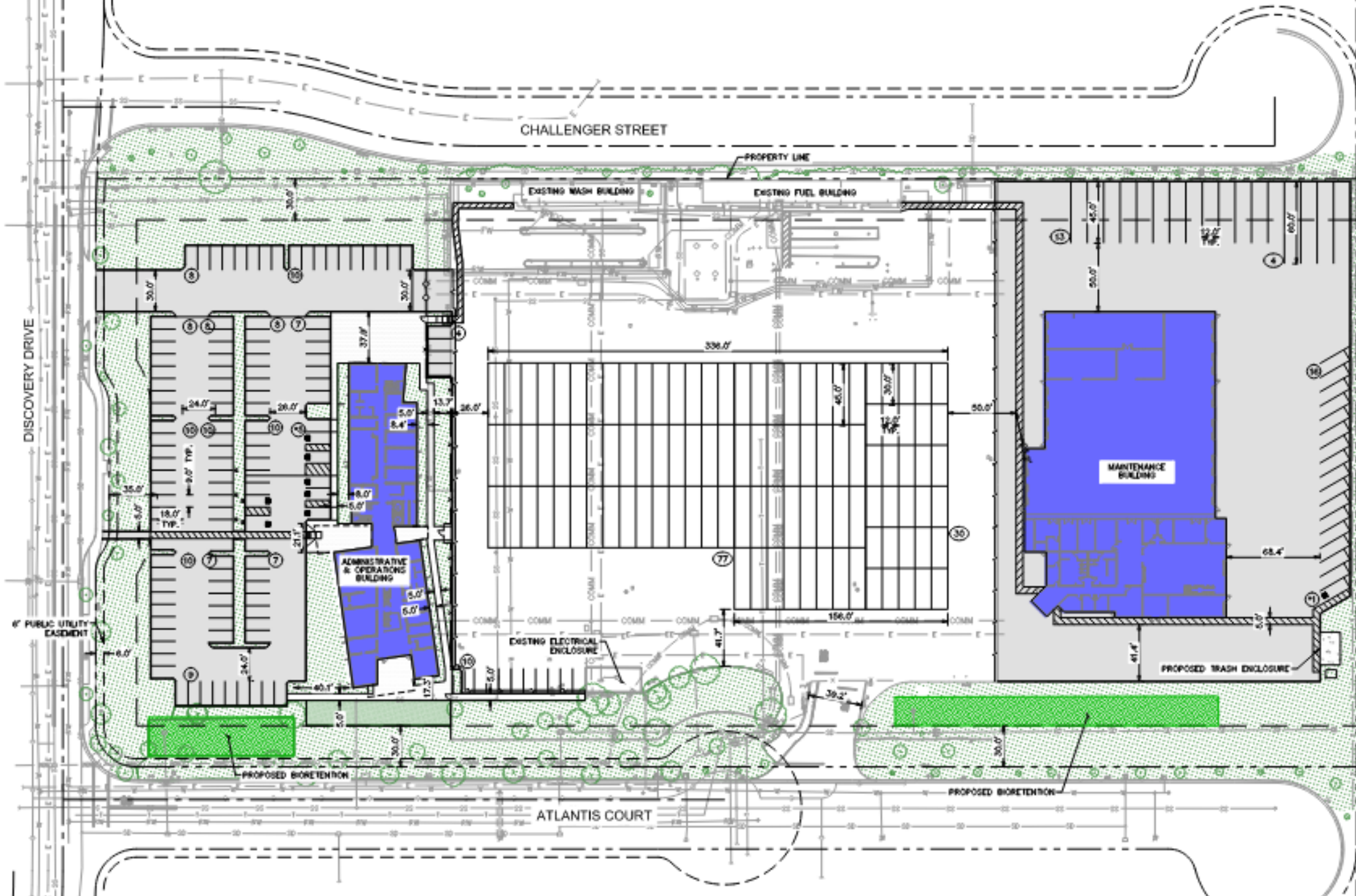
## Atlantis Court Transit Facility



Project Status Update  
March 1, 2021











(1) SITE MONUMENT SIGNAGE WALL FEATURE



(2) ENHANCED HARDWARE AT ENTRIES



(3) PERFORATED STEEL PANEL FENCE/ROLLING GATE (MATCH ARCHITECTURAL SPEC)



(4) FOOD TRUCK ACCESS VIA ROLLING GATE



(5) PERIMETER PERGOLA/ARBOR



(6) MOVEABLE CAFE CHAIRS AND TABLES



(7) PICNIC TABLES FOR GROUPS



(8) ADIRONDACK/CHAIRE SEATING



(9) AT-GRADE DECK AREA



(10) CAST-IN-PLACE BENCH SEATING



(11) LOUNGE-STYLE SEATING FOR GROUPS



NO.	REVISIONS	DATE	BY

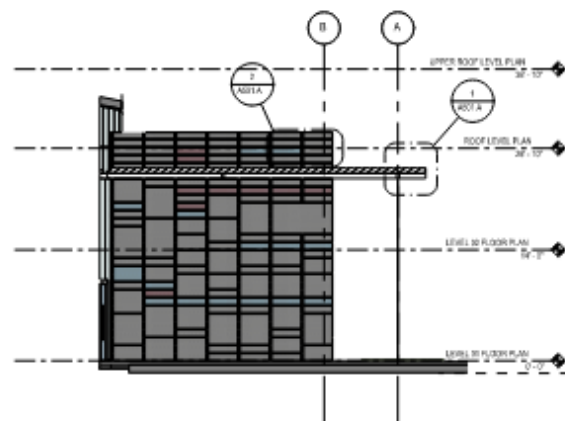
**Kimley»Horn**  
 4001 CHERRY DRIVE, SUITE 200, PLACENTIA, CA 92669  
 PHONE: 951-388-8800 FAX: 951-388-4549  
 WWW.KIMLEY-HORN.COM

30% SCHEMATIC DESIGN
SCALE: 1/8" = 1'-0" DATE: 12/18/2020 SCALE: AS SHOWN DESIGNED BY: [blank] DRAWN BY: [blank] CHECKED BY: [blank]

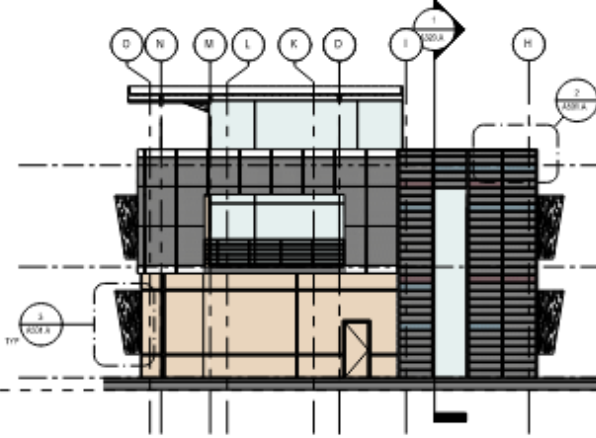
**LAVA ATLANTIS SITE**  
 675 ATLANTIS COURT  
 LIVERMORE, CA 94550

**NORTH HARDSCAPE PLAN**

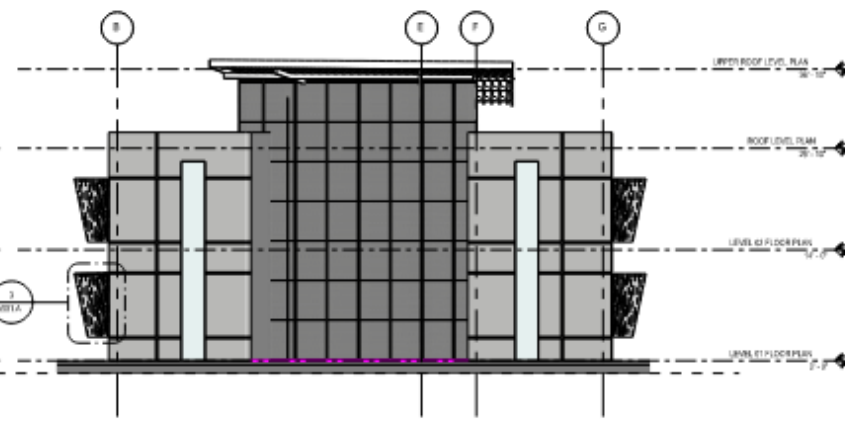
SHEET NUMBER  
**L200**



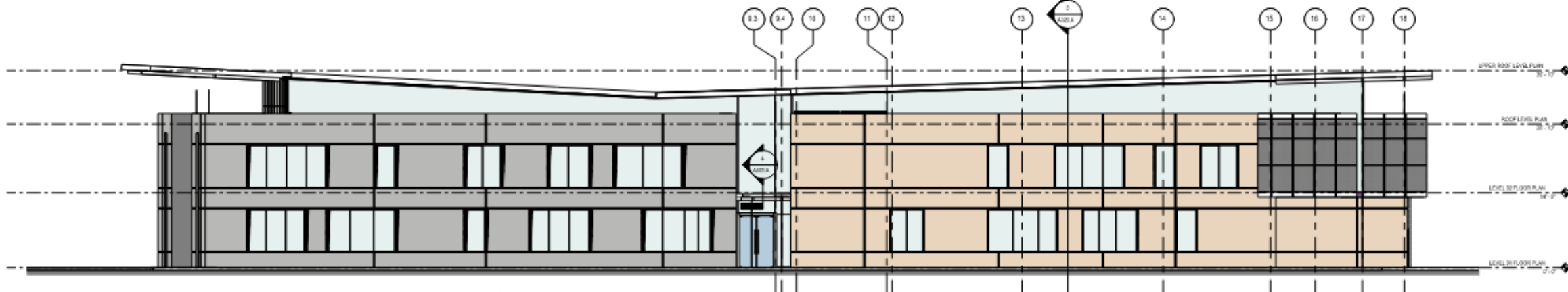
5 ENTRY WALL ELEVATION  
3/32" = 1'-0"



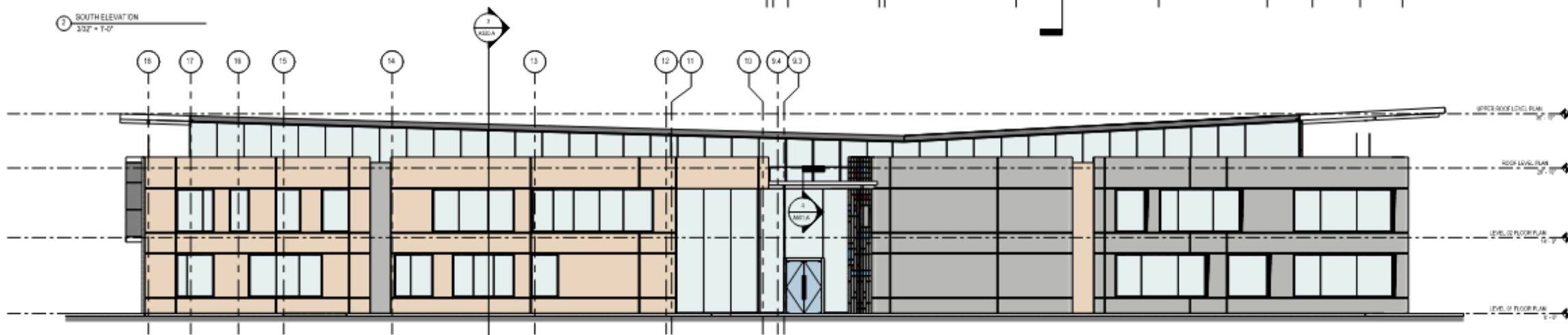
4 EAST ELEVATION  
3/32" = 1'-0"



3 WEST ELEVATION  
3/32" = 1'-0"



2 SOUTH ELEVATION  
3/32" = 1'-0"



1 NORTH ELEVATION  
3/32" = 1'-0"





















PLANT SCHEDULE

SYMBOL	CODE	BOTANICAL / COMMON NAME	CONT.
	BB	BORQUE TREE	24" BOK
	CT	CONFER TREE	48" BOK
	ER	EXISTING TREE TO REMAIN (FOR REFERENCE ONLY)	
	LB	LARGE BROADLEAF SHADE TREE	48" BOK
	MS	MEDIUM BROADLEAF SHADE TREE	48" BOK
	BT	SMALL MULTI-TRUNK TREE	24" BOK
	OT	SMALL ORNAMENTAL TREE	24" BOK
	AT	SPECIMEN TREE	48" BOK

1 ORNAMENTAL PLANTS MAY INCLUDE:

- AGAVE 'BOUTHIN BLUE' - BOUTIN BLUE AGAVE
- ARCTOSTAPHYLOS SP. - MANZANITA
- BACCHARIS PILULARIS - COYOTE BRUSH
- CALLISTEMON 'LITTLE JOHN' - BOTTLEBRUSH
- CARISSA MACROCARPA - NATAL PLUM
- HELIOTRACHON SEMPERVIRENS - BLUE OAT GRASS
- JUNCUS PATENS - CALIFORNIA GRAY RUSH
- LOMANDRA LONGIFOLIA 'PLATINUM BEAUTY' - MAT RUSH
- MUHLENBERGIA DUBIA - PINE MUIHLY
- MYRTUS COMMUNIS 'COMPACTA' - DWARF MYRTLE
- OLEA EUROPAEA 'LITTLE OLLIE' - DWARF OLIVE
- PITTOSPORUM TENIAFOLIUM - KIHUHU
- RHAMNUS CALIFORNICA - COFFEEBERRY
- SANSEVERIA TRIFASCIATA - SNAKE PLANT

2 BIO-INFILTRATION PLANTS MAY INCLUDE:

- BACCHARIS PILULARIS - COYOTE BRUSH
- BOUETIA GRACILIS - BLUE GRAMA OATS
- CAREX PANSA - DUNE SEDGE
- CAREX PRAEGRACILIS - CALIFORNIA MEADOW SEDGE
- CHONDROPETALUM TECTORIUM - DWARF CAPE RUSH
- JUNCUS PATENS - CALIFORNIA GRAY RUSH
- LOMANDRA LONGIFOLIA 'BREEZE' - DWARF MAT RUSH
- MUHLENBERGIA RIGENS - DEER GRASS
- RHAMNUS CALIFORNICA - COFFEEBERRY
- ROSA CALIFORNICA - CALIFORNIA WILD ROSE
- STIPA ARUNDINACEA - NEW ZEALAND WIND GRASS

NOTES:

1. THE PRELIMINARY LANDSCAPE PLANTING SCHEME HAS BEEN CHOSEN FOR DROUGHT TOLERANCE, ADAPTABILITY, AND BASED ON LOCAL AND REGIONAL CLIMATIC CONDITIONS. SELECTIONS MAY BE SUBJECT TO CHANGE AS THE DESIGN IS DEVELOPED.
2. ALL PLANTS PROPOSED FOR BIO-INFILTRATION AREAS ARE COMPLY WITH THE ALAMEDA COUNTY CLEAN WATER PROGRAM.
3. PLACE 3-INCHES OF COMPOSTED, NON-FLOATABLE MULCH IN AREAS BETWEEN STORMWATER TREATMENT PLANTINGS AND SIDE SLOPES.



DATE: 12/16/2020  
DRAWN BY: [blank]  
CHECKED BY: [blank]  
PROJECT: 811

4833 DUBOIS DRIVE, SUITE 200, PLEASANTON, CA 94566  
PHONE: (925) 865-1100  
WWW.KIMLEY-HORN.COM

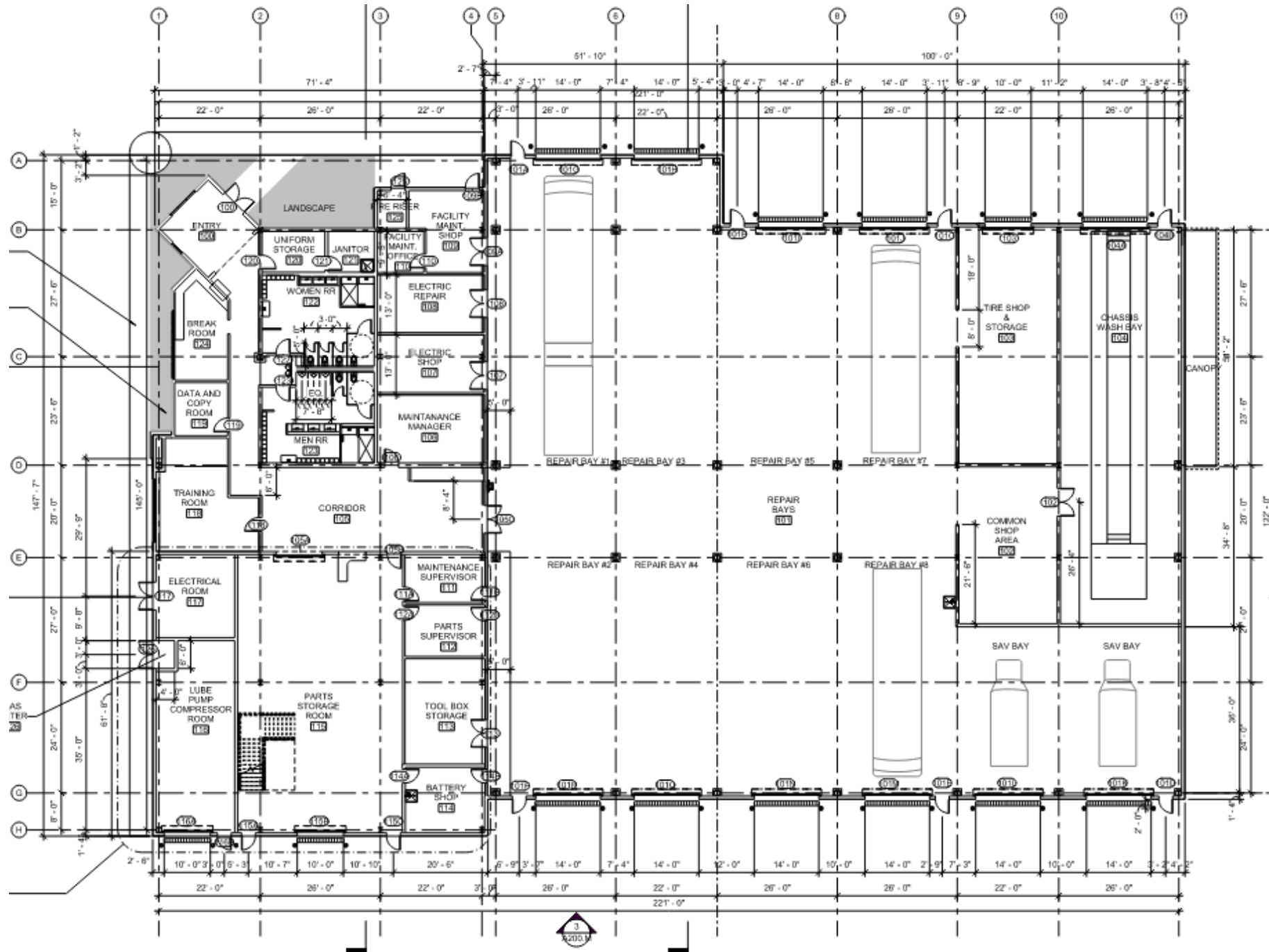
30% SCHEMATIC DESIGN

LAVA ATLANTIS SITE  
875 ATLANTIS COURT  
DUBLIN, CA 94568

SOUTH LANDSCAPE PLAN

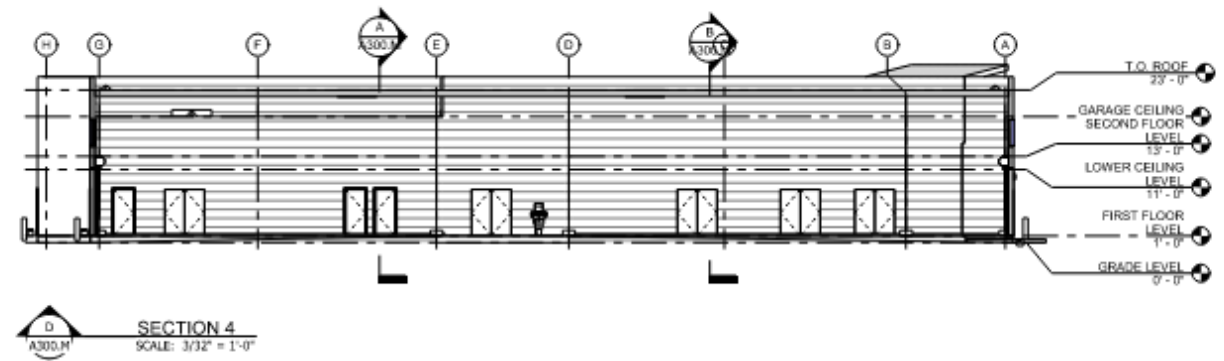
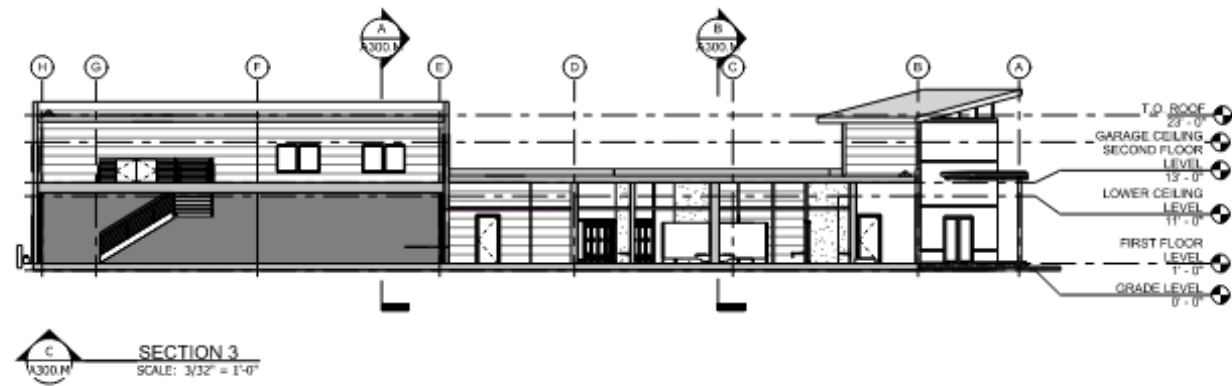
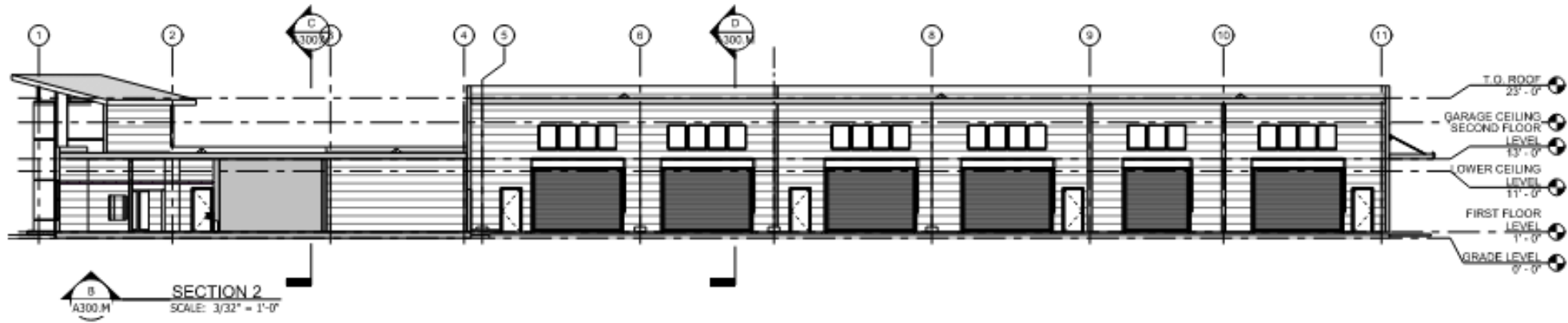
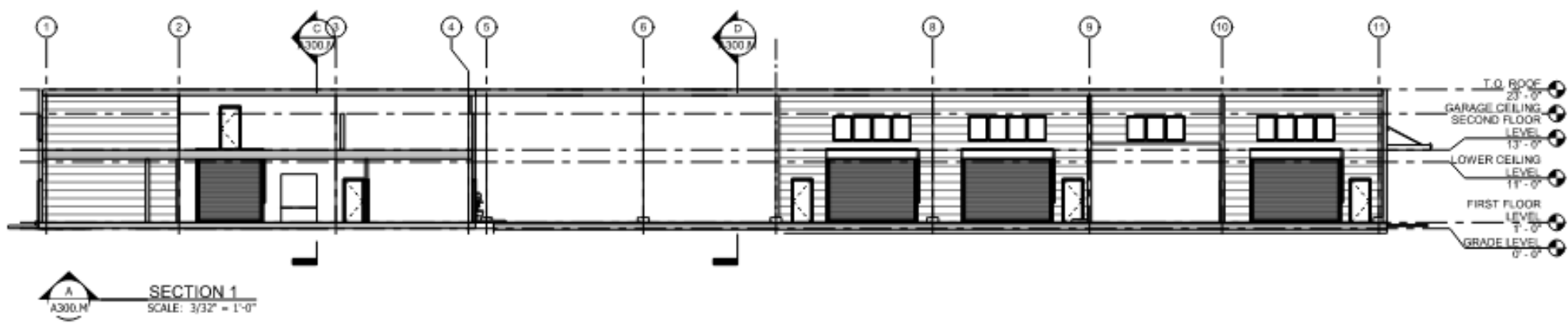
SHEET NUMBER  
L301





FIRST FLOOR PLAN

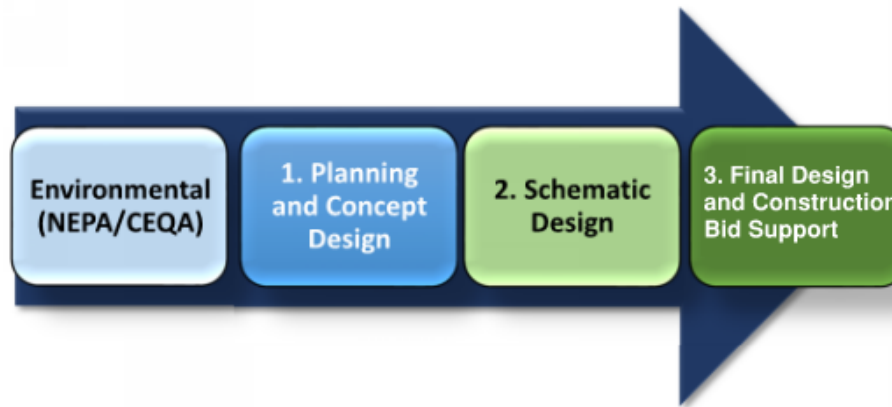












### **PHASE 3 SERVICES AND DELIVERABLE**

Phase 3 services will include:

- Bid Level design for Grading, Utility, Stormwater, Landscape, Lighting and Electrical
- Bid Level design for Architectural services
- City Planning Approval
- Incorporation of CTE Study
- Bid support for onboarding General Contractor

### **STAFF RECOMMENDATION**

Staff recommends that the Project & Services Committee refer Resolution 27-2021 to the Board of Directors, authorizing the Executive Director to execute a Contract Task Order with Kimley-Horn and Associates for bridging/design services for the Atlantis Transit Facility, for a not-to-exceed amount of \$902,000 with a contingency amount of \$90,200 to be utilized at the discretion of the Executive Director.